

FOREST KHAWVEL

Pic: Kima Chhangte

DGF & SPECIAL SECRETARY, GoI IN MIZORAM A TLAWH

Pu Siddhanta Das, IFS, DGF & Spl. Secy. Govt. of India chuan ni 24-26 March chung khan Mizoram a rawn tlawh a, Shri Uma Kant IFS, Residence Commissioner, New Delhi chuan a rawn tawiamw bawk.

DGF hian a cham chungin Aizawl Zoological Park, FRCBR leh Forest Training School te a tlawh a, heng institution te hmalak mekna leh an harsatna te enpuin hmalak dan tur leh tih changt-lun dan turte a sawipui a ni.

DGF hian Pu Zoramthanga Hon'ble CM Mizoram pawh a hmu a, Mizorama mau plantation leh mau hmanga thilsiam de-hchhuah theih dan tha zawk te an sawi dun a ni. Hon'ble CM Mizoram chuan Mizoram mau te aia tha leh thar hlawk *D. latiflorus* leh *D. brandisii* te chu Mizoram-ah chin pun a that tur thu a tarlang a, hemi atan hian bamboo link road pawh tam zawk siam a pawimawh thu a lo thlen a ni.



FROM EDITOR'S DESK

Forest Survey of India-in a tarlan danin Mizoram hian kum reilote chungin ramngaw kan hloh nasa hle a. Ramngaw kan hlohna chhan zingah tlangram lo neih, ramkang, development hrang hrang- kawnglah, HEP te leh dan lova thingzai, thing tuah, ram chawmhleh leh chak lak te hi lang-sar pawl an ni. Tin, zirchiannain a tarlan danin Assam leh Mizoram chu Himalayan state 12 zingah Climate Change-in a nghawng nasat ber turte kan ni. Tunah pawh climate change kan tawrhna larsar tak chu tuihna tlem leh kangchat mek te hi an ni awm e. Chuvangin ramngaw leh nungcha humhalh hi kan zavaia mawhphurhna a ni tih hriain, tun aia nasain mi tin ten ramngaw leh nungcha humhalh kawngah tan ila ang u.

Thanking you

Lalbiakchama
Chawngshu.

Editor

email - efextension16@gmail.com



CM bakah hian DGF hian Dr. R. Lalthangliana Minister leh Pu T.J. Lalnuntluanga MoS, Forest te pawh a hmu bawk. Pu T.J. Lalnuntluanga Forest Minister chuan Mizoram Forest Department-in service matter chungchanga harsatna an tawh mek te bakah Central sawrkar atanga fund hmuh tur chungchangte lo sawipuiin, a rang thei anga chinfel sak turin DGF hi a lo ngen a, DGF chuan lo bawhzui ngei a tum thuin a chhang a ni.

Tin, ni 25.3.2019 (Thawhtanni) khan Reiek leh Ailawng khuaa REDD+ pilot project kalpui mek te a en a, khawtlang leh NGO hruaitu te kawmin titi hona a neihpui a, Community reserve mipui ten an humhalh mek te pawh enin hetiang a mipui vantlang enkawl ramngaw Mizorama kan la nei chu ropui a tiin entawn tlak a tih thu a tarlang bawk. Hemi ni vek hian Forest officers tenen interactive session PCCF Conference Hall, Aizawl-ah a nei bawk a ni.



FIRE PREVENTION WEEK 2019 MIZORAM PUMAH HMAN A NI.

Ram kang a lo tlem deuh deuh theih nana mipuite inzirtir nana hman thin Kangmei Ven Hapta(Fire Prevention Week) chu ram pumah February ni 11-16, 2019 khan hman a ni.

He kangmei ven chawlhkar hi Synod Conference Centre, Aizawl-ah Health & Family Welfare Minister, Dr.R.Lalthangliana'n a hawng a. He hnah hian Environment, Forests & Climate Change Minister, Pu T.J. Lalnuntluanga chu Khual zahawm a ni bawk a; he kangmei ven hapta launching programme-ah hian Forest Dept., Police leh sorkar department officials, DIET zirlai bakah ramngaw leh nungcha humhalhtu pawl aiawh engemaw zat an tel.





He inkhawmah hian khuallian Dr. Thangtea chuan hriseina leh environment humhalh nana kawng pawimawh 3 a sawi a, chungte chu - invenna (preventive), tihdam (curative) leh tihchangtlun (promotional) a ni a, chung zinga pawimawh ber chu inven lawkna a ni, a ti. Mizoram chu Mizote tana Pathian ruat a ni a, hei lo hi ram dang min pe lova, chuvangin neitu rilru tak tak nena mawh-phurhna lak ngamna 'economic nationalism' hi Mizo rilruah tuh a pawimawh hle a, hei hian sorkar pawh a khalh ngil mai dawn a ni, a ti. FSI Report (2017) chuan Mizorama forest area 531 sq kms hloh then a nih thu a tarlang chu a vanduaithlak

hle a, India ramchhunga lui tui 90% chu bawlhhlawh 'polluted' a ni tawh tih a sawi bawk.



Ramngaw leh nungchate humhalh kawnga mipuite hrilh harh leh zirtir kawngah tunlai changkanna smartphone leh social media te hmgang tangkai thiam turin kalkhawmte a chah a, Mizorama NGO lian leh Kohhran te pawhin environment humhalh kawnga sorkar hmalakna chu theih tawpa thlawp turin a sawm bawk.

Khual zahawm EF&CC Minister, Pu T.J.Lalnuntluanga chuan ramkang venna atana sorkar hmalaknate zawm a pawimawh thu sawiin The Mizoram (Prevention & Control of Fire in the Village Ram) Rules, 2001-ah pawh Village Council-ten ram a kan loh nana hma an lak dan tur leh hremna an lekkawh theih dan tur tarlan a ni, a ti. Ramkang avangin tuihna a kang chat a, a bawlhhlawh phah thin a, nungchaten an tuar em em bawk avangin a ven leh thelh hi mi zawng zawng tih tur a nih thu a sawi a. Ram tikang lo tura



hmalak leh midangte zirtir kawngah mitin hi palai 'ambassador' kan ni theuh a ni a ti.

PCCF & Member-Secretary, State Level Fire Prevention Committee Dr. Ch.M.Rao, IFS chuan ramkang laka inven nana EF&CC Department hmalakna hrang hrangte a tarlang a. Kumin Fire Prevention Week Thupui-ah 'Ram tikang lo turin mi tin i fimkhur ang u' tih hman a ni a, District zawng zawngah pawh hmalak a nih thu a sawi.

He inkhawmah hian thuchham 'PLEDGE' sawirual a ni bawk. District dangah pawh Fire Prevention Week hi DC leh DFO te hmalakna in urhsun tak a hman vek a ni.

IMPACT OF CLIMATE CHANGE ON FOREST OF MIZORAM

Mizoram zau zawng 86.27% (18,186 sq km) hi ramngaw la niin India ramah a percent zawnga chhutin ramngaw nei zau ber kan ni (ISFR 2017). Ramngaw 131 sq km a zau chu ramngaw chhah tha tak (Very dense forest) a la ni a, Moderate dense forest 5861 sq km leh open forest 12194 sq km a zau kan nei bawk a ni. Mizoram hi India ram zau zawng za zel a 0.64 chauh ni mah se, India ramngaw leh thing hmun 2.33% chu Mizoram a awm a ni a. Heng avang hian ramngaw siam nan leh a awmsa tih phuisui nan ramruak la awm hi a tlem a, tuna plantation awmsa leh ramngaw chereu zel tur thum that hi ngaih pawimawh hmasak a tul hle a ni.



Mizoramah hian mi pakhat zelin ramngaw pangngai a chan (per capita forest cover) hi 1.71 ha a ni. Amaherawh chu heng ramngawte hi tlangram lo neih vang te, ram kang, thing kih dan mumal lo leh ramngaw atanga mamawh kan lak tam lutuk a vangte leh ram leilung hman dan mumal lo te avangin a zim tial tial a. Mizoram hi India ram state zingah chuan ramngaw tichhe nasa ber pawl kan ni awm e.

Changes in Forest Cover

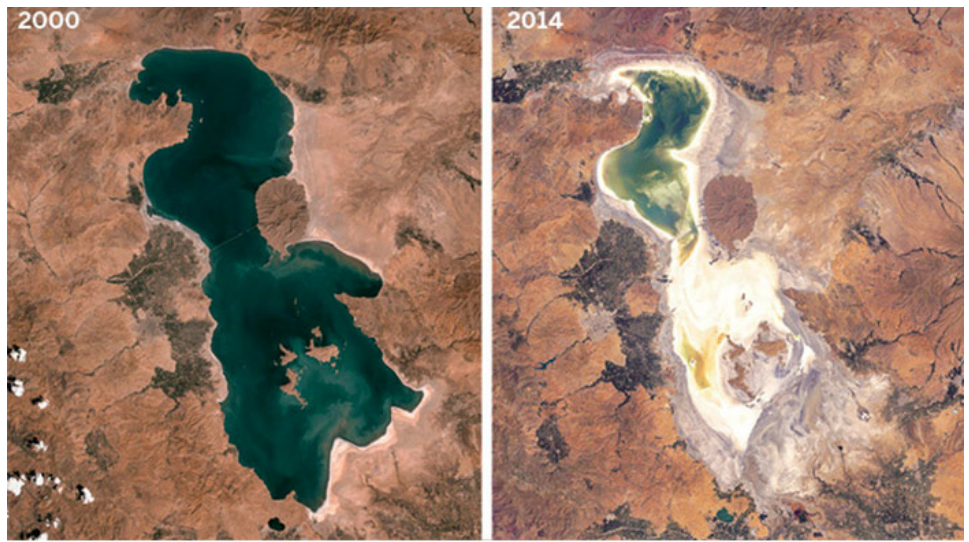
Satellite hmanga zirchianna atanga a lan danin Mizorama ramngaw danglam dan chu a hnuai a table-ah hian tarlan a ni a. Kum 2005-2017 chung khan Very dense forest te chu 1.5% in a kiam a, Moderate Dense Forest te chu 5% in an kiam bawk a ni.

Year	Very Dense Forest (km ²)	Moderate Dense Forest (km ²)	Open Forest (km ²)	Total Area (km ²)
2005	133	6173	12378	18684
2009	134	6251	12855	19240
2011	134	6086	12897	19117
2013	138	5900	13016	19054
2015	138	5858	12752	18748
2017	131	5861	12194	18186

Drivers of deforestation/forest degradation in Mizoram

Mizoram a ramngaw chereuna chhan hrang hrangte chu a hnuai a mite hi an ni.

- Hmanlai lo neih dan – shifting cultivation
- Lohal te, kan ngaihthah vang leh kan fimkhur loh vanga ramkang
- Mimal hman leh hralh atana thingtuah tur kan lak nasat lutuk avang te
- Thing ni lo ramngaw atanga kan hmuh theih dang NTFPs - maute, hruihnang, theirah, ramhnim dam-dawi, nauban etc kan lak nasat lutuk a vang te
- Phalna tel lo a thingzai leh ban atana thing kih
- Hmasawna thenkhat rel kawng, power line, HEP leh office hmun atan te a ramngaw tih chhiat leh adangte



Mizoram hian sik leh sa inthlak danglam avang hian harsatna nasa tak la tawk lo mah ila, a hnuai tarlan thenkhat atang hian kawng hrang hrangin he sik leh sa inthlak danglam hian a nghawng ve tih a lang thei a ni.

- Shifting of cropping/floral zones : Kum 10-15 kalta khan Serthlum te hi khawthlang lam Mamit District-ah an thar tam em em a, mahse tunah chuan khawchhak lamah an thar tan tawh a ni. Tin, tunhma a lamkhuang (*Artocarpus heterophyllus*) la thar ngai lohna Champhai-ah pawh a rah hmuh tur a awm ta nual mai.

- Irregular rainfall pattern: Tunhma khan pi leh pute chuan ruahtui tlak hun tur hi an sawilawk thei thin a, tunah chuan ruahtui tlak dan a danglam a, a tlak hun tur a sawi lawk theih tawh loh a ni.



- Incidence of strong wind: Tunhma chuan thlipui hi kumtin May ni 15 hmam a tleh tlangpui a, tunah erawh chuan thli thleh hun a inthlak danglam a, a tleh hun pawh a sawi lawk theih tawh loh a ni.

- Decreased or drying up of water sources: Thingtlanga cheng tam zawk chuan an khaw bul hnai tui hna awmte an ring mai thin a, mahse tunah chuan heng tuihna tam tak te hi a kang chat zo tawh a ni.

- Incidence of malarial diseases: Tun hmaa Malaria la awm ngai lohna hmun Champhaiah Malaria a awm tawh thu report a ni ta bawk.(Vanramliana, 2014)

- Hmun hniama Chengchi rannungte hmun sang zawkah an insawn a eg: Laiking/Lizards (Lalrinch-hana, 2015)

- Tun hmaa Mizorama kan la hmuh ngai loh, phairam sava a kan ngaih sava chi thar te Mizoramah an lo awm tan ta bawk eg. White headed black bulbul; Chestnut tailed starling etc.

- Ruahtui lo hiptu leh paitu ramngawte an chereu avangin tui luang ral a tam a, chuvangin lui tui te an lian nasa a, tin lei tha tam tak tuiin a len bo bawk a ni.

- Tunhma aiin Leimin a thleng nasa zawk.

- Mulberry Silk worm-te hi Assam-ah an tha duhin Assam State hming chherna pawimawh tak a ni thin a. Tunah chuan Assam aiin Mizoram (Kolasib Dist)ah Mulberry Silk Worm te hi an tha duh tawh zawk niin report a ni.

- Mau te an par hun pangai ni loah tlem te tein an par nasa hle bawk a ni.

Heng kan tarlan bakah pawh climate change avanga Mizorama thil danglam leh kan la hriat ngailoh thleng a awm nual mai. Engpawh nise heng climate change leh a nghawng thil tha lo te kan

tawrh zel loh nan kan ramngaw neihte humhalh ila. Mi tinin kan mawhphurhna a ni tih hriain thei-htawp i chhuah theuh ang u.

GLOBAL WARMING DO TU HMING THANG

Swedish zirlai naupang te, Greta Thunberg, khawvel puma sik leh sa ti ziaawm tura hma latu pakhat chu Nobel Peace Prize dawng thei tur chhawp chhuah zingah a tel. He hmeichhe naupang kum 16 mi hi Norwegian MP pathumin an nominate a, he Nobel Peace Prize hi a dawng a nih chuan Nobel peace Prize dawng thei zinga naupang ber a ni ang.

Who is Greta Thunberg????

January ni 3, 2003-a piang Greta Thunberg hi Global Warming leh Climate Change a ziaawm/ tawp theih nana hma latu a ni a. Kum 2018, August thlaa Swedish Parliament building hmaa School Strike for Climate a neih atangin mite ngaihven a hlawh tan a, heta tanga vawiin thleng hian kar tin Zirtawpni apiangin school thulhin strike hi a nei thin a ni. December thlaa UN Climate Talk, Poland-a neihah leh January thlaa World Economic Forum Davos-a neihah a thusawite avangin mite hriat a hlawh leh zual a ni. Davos-a a thusawina-ah chuan " Climate change chung changah hian kan hlawh chham tih hi kan hriat a tul tawh a ni" tiin a sawi. He Swedish tleirawl hian a Twitter page-ah 'Climate Activist kum 16 a upa, Asperger natna vei' tiin a nihna a sawi a ni.



School Strike for climate

Tun hnaiah Sweden ram pumin khawlum nasa tak leh ram kang nasa tak an tuar a. Hemi avang hian Grade 9 zirlai naupang Greta Thunberg chuan August ni 20, 2018 atangin Sweden General Election September ni 9, 2018-a neih tur thlen hma chu a thil phut tih hlawhtlin nan school kal chawh- hsan turin thutlukna a siam a. A thil phut ber Swedish Sawrkarin Paris Agreement duh dan ang an ramin Carbon a tihchhuah titem tura hma a lak a ni. Nitin School kal hun chhungin Riksdag (Swedish Parliament building) hmaah 'Skolstrejk for Klimatet (School strike for climate)' tih kengin a thu thin a. Election zawh hnuah pawh a strike hi chhonzawmin vawiin theng hian Zirtawpni apiangin School a chawl thin a ni. Hei hian khawvel hmun hrang hranga zirlai naupangte tiharh tharin December 2018 thleng khan khawvel puma khawpui hrang hrang 270 velah zirlai 20,000 chuangin zirtawpni apiangin strike hi an nei thin a ni. Thunberg chuan Parkland School, Florida a zirlai naupang ten 'March for Our Lives' an huaihawt chu hetiang ngaihtuahna put chhuah tirtu niin a sawi.

Prize and awards

May 2018 a Svenska Dagladet buatsaih 'Climate for young people' tih hmanga article inzhiah siakah lawmman a dawng a. Tin Electricity Company Telge Energi Prize, naupang leh thalai Sustainable Development promote thate tana buatsaih Children's Climate Prize dawng thei tur zingah chhawp chhuah a ni leh a, mahse he lawmman dawng tur hian Stockholm-ah thlawhnaa kal a ngaih dawn avangin an rawtna hi a pawm ta lo a ni. November 2018-ah Fryshuset scholarship of the Young Role Model of the Year award a dawng a, December 2018 khan Time Magazine World's 25 most influential teenagers of 2018-a thlan chhuah zingah a tel leh a, International Women Day 2019 khan Aftonbladet chanchinbu chuan Sweden-a Most important Women of the Year 2019-ah a puang bawk a ni.

THUPEK HMASA BER

Dr C.Lalhmingliana (Padma Shree Awardee, 2003)

Pathian khan ni leh thla leh arsate a siam hnuah he leiah hian nunna nei chi hrang hrang a siam leh a. Leilunga ram hmul chi hrang hrang leh nungcha chi hrang hrang a siam hnuah mihring a siam ve ta chauh a ni. Thilsiam zingah chuan mihring kha a naupang ber an ni. Mihring a siam hnuhnun ber chhan chu thilsiam dangte tel lo hian kan nun theih dawn loh avangin a ni.

Mihringte kha ama anpuuin a siam a. A siam tirh phat khan thilsiam dangte nena an inlaichin dan tur te, an chungan rilru put dan tur te, an chet vel dan turte hrilhin leilunga an awm dan tur chungchangah thu a pe a ni. Kan bible-a a bu hmasa ber Genesis-ah hian mihring zawng zawngte hnena a thupek hmasa ber zinga pathumte chu kan hmu a, chungte chu:

1. In thu thuin awmtir rawh u (Genesis 1:28).

Heta 'thu thua awmtir' tih hi a Hebrai tawng thiamte sawi dan chuan 'Kabash' a ni, an ti. Sipai tawng deuh bika hman a ni awm e. A awmzia chu min beitu hneh leh tukdawl tihna a ni. Hei hian tihchhiat ni lovin ngamtu nihna leh thuh-nuaia dah a kawka. Leilunga thilsiamte chu an thuh-nuaia dah turin a ti a ni.



Tichuan, chu thupek ang chuan nungcha tam tak chu kan khawi ngam a, kan chhawr a, kan ei turin kan vulh pungin thlaite pawh kan ching pung bawka ta a ni. Leilunga nunna nei lote pawh kan thu hnuaiyah kan dah nasa hle. Kan chenna in te, kan incheina te, kan khawl chi tinreng leh kan thil siam zawng zawngte hi an awm dan pangngai tidanglama kan thu thua kan awmtir theih avanga kan siam danglamte an ni. Kan hlimpui em em mobile phone te, kal vel nana kan hman lirthei leh thlawhtheihna te, nileng lenga kan en TV te, a lova kan awm rei hleih theih loh rimawite hi leilung kan thu thua kan awmtir rah chhuah a ni.

2. An chungah thu nei rawh u (Genesis 1:28).

Hei hi thupek hmasa nen khan a inhnaih hlein a lang a. Hebrai tawngah chuan hei hi 'Radah' a ni, an ti a, lal thu neihna tawngkam, lal rorelna tawngkam bik a ni. Abikin Pathian duh dana lal nihna a kawka. Chuvangin, lal nunrawng ni lovin, lal inthlahdah leh ngaihsam mai mai ni lovin, lal nawmchen uar tak tak ni hek lovin, lal fing leh fel, lal ngilnei leh taima, khua leh tuite sa himna ngai pawimawh, an mawmawh ngaihtuah a, tanpuitu leh venghimtu lal ni turin a duh a ni. He thu hi Sam 72:8, 12-14 thuah hian hman a ni.

3. Enkawh leh veng turin (Genesis 2:15).

He thupek pawh hi a hmaa mi nen an inhnaih hlein a lang. Hei hi Hebrai tawng chuan 'Shamar' a ni, an ti. Hei hian a huam nia an sawi chu kawka tha, vawng him, thlithlai, veng, leh chhanhim tihte a ni. Sam 121 thua 'Lalpa min humtu' tih a, Lalpa chu min vengtu leh humhimtu a nihzia a sawina tawngkam hi Genesis buah hian hman niin an sawi.

Pathianin mihring a siam tirh phata a thupek hmasa ber chu hetiang hi a ni. Nimahsela, mihringte hian he thupek hi nasa takin kan bawhchhe ta a ni. Sakhaw lian zual betute zingah Hindu-hote hian nungcha tam tak hi an pathian hrang hrang nen inkungkaihna neia an rin avangin an tina duh lo va. Kei ni Kristiante erawh chuan duh duha ching phar theia inngaihna kan neih avangin nungchate kan

lainat nep bik niin a lang. Eng pawh ni se, mihring nawlpui hrim hrim hian Pathian thilsiam hi kan en dan hi a dik hlel em em a. Kan rilru put dan dik lo lai thenkhat chu lo tar lang ila:

- 1) Leilung hi mihringte tan liau liauva siam, thilsiam dangte chu lo awm ve mai mai, kan duh duha suasam vel mai mai turah kan ngai.
- 2) Kan tana tangkaina neia kan hriatte chauh hi leilung tan pawha hlutna nei niin kan ngai.
- 3) Kan tana tangkaina nei lo nia kan hriatte chu leilung tan pawh hlutna nei miah lovah kan ngai.
- 4) Kan duhamna avangin insum theihna kan nei lo va, kan tana tangkaite pawh ral hun nei lo tura ngaiin, renchemna nei miah lovin kan suasam bawrh bawrh mai a ni.
- 5) Kan tana hlutna nei lo nia kan hriatte phei chu kan ban phak apiang kan tichhe bawrh bawrh zel mai a ni.

Leilung humhalh tulna chhan hi lian tak pahnih a awm a, chungte chu: pakhatnaah chuan Pathian thupek a nih avangin. Pahnihna chu kan tel lo hian thilsiam dangte hi an awm thei a, keini erawh chu anni tel lo hian kan awm thei lo va, an chimih chuan keini pawh chimit ve mai tur kan ni.



Vana arsi chhiar sen lohte khi chu a siamtu duh angin an inher mup mup mai a. Kan leilung erawh hi chu nunna nei, danglam fo thei a nih avangin a enkawl turin Pathianin min dah a ni. Huan pakhat chauh enkawl tur ni lovin, leilung pumpui enkawl turin thu min pe a ni. Leilung pumpui chu mi pakhat emaw, khaw pakhat emawin kan enkawl thei lo. Mahse, tih theih kan nei, Leilung pumpui hre rengin khawtualah hma kan la thei. Hei hi sapho chuan, "Think globally, act locally," an ti a. Chu chu, "Khawvel pumpui hre rengin khawtualah hma la rawh," tihna a ni ber awm e.

KAN RAMNGAW HI ENGTIA HLU NGE

C. Lalbiaka DFO Champhai

Mihring mamawh tinreng hi ramngawah hian Pathianin a dah a. Ramngaw atanga kan mamawh kan lakte hi a thlawn a nih avangin hlutna nei lo, thil ni tur rengah kan ngai a. A thlawnin kan hmang tur pawh a ni, amaherawh chu, a hlutna hi kan ngaihtuah tel a tul hle mai. Ramngaw hlutna te, renchem leh humhalh a pawimawhzia te hriatna lamah kan thanharh theih nan a hlutna (monetary value) hi i han tar lang teh ang.

RAMNGAW HAUSAKNA – FOREST RESOURCE

Ramngaw atanga kan lak hi a tam hle a, sawi kim sen pawh a ni lo vang, ramngaw hausakna hi nungchate nen lam hian duh duha thah leh lak mai mai theih anga ngaihna (right of collection) hi kan than hnan hneh hlein ka hria. Khaw thenkhatah chuan Krismas kut sa atan ramsa hmang thin an la awm cheu a ni awm e.

Ramngaw hausakna hian a huap zau em em a, hlawm hnih lian pui puiin then a ni a, chungte chu '**Tangible Benefits**' leh '**Intangible benefits**' te an ni.

TANGIBLE BENEFITS:

Mita kan hmuh a, kuta kan khawih theih; hamthatna thil chi hrang hrang ramngawin min pek hi Tangible benefit chu a ni a, Direct Benefit an ti bawk thin. Chungte chu a tlangpui chauh tar lang ila Thingzai, thingtuai, tuahthing, insak nana chak chi hrang hrang, chawhmeh, hruihnang, thing leh hnim damdawi, mau, mautuai, theirah ang chi te hi Tangible benefit chu an ni.

Thingtlang khua ramngaw depa awm te phei hi chu ramngaw nen hian kan inzawm nasa khawp

mai a, kan economy leh kan nun phung zawng zawng hi ramngaw nen a inzawm vek tih thei hial a ni. Ramngaw hausakna hmuh theih apiang kan la a, kan ei a, kan zuar a, chhungkaw chawm nan kan hmang thin. Khaw lian zawk Bazar pawh ramngaw chawhmeh, thing leh mau, hrui hngang, nungcha te nen lam kan chawm thin. Ramsa rep, sava, lui sa, ram chawhmeh ngaina hnam kan ni a, kan ram hruaitu te leh mi liante pawh hian hei hi kan la ching tlat niin a lang. Kan ramngaw hausakna hi tawp chin nei, hman zawh theih, kan enkawl dan leh kan hman (harvest) danin a zir loh chuan kumkhua atan rural zo mai thei a ni a. Mi tam ber hian kan hmuh theih apiang hi lak vek a, a lo insiam leh dan tur pawh ngaihtuah lovin mahni a chen ral mai hi kan tum emaw tih tur a ni. Forest resource hi kan chen zawh hun chuan vawiina man nei loa kan lak mai mai thin te lo hlutzia hi kan hre chiang khawp ang. Chumi hun chu lo thleng ta se la, kan vaiin kan tuar ang a, thingtlang mi leh ramngaw hnaiha chengte leh khawsak harsa apiangten kan tuar nasa ang. Hetiang taka thil hlu hi ramngaw hian min pe reng a ni tih hriain kumkhaw daih tur (sustainable use) zawnga kan enkawl a kan humhalh hi a tul a ni.

Dr. N.S. Bish, IFS Rtd-in Mizorama Chief Conservator of Forests hna a chelh chhunga Forest officer leh field staff-te hmanga data la khawmin ramngaw hlutna a chhut chhuah hi Forest valuation kan neih hmasak ber a ni a, a lawm awm hle a ni. Mizoram Forest Dept-ah hian state pawn atanga lo kal Forest Officer sulhnu pawimawh (contribution) kan ramin kan chhawr tangkai zui tur hnuchhiahtu hi sawi tur an awm lem lo. Dr. NS Bish, IFS te ang mi taima leh Mizoram tana contribution tha tak mai min hnutchhiahtu Forest Officer an awm hi a ngaihhlutawm hlein ka hria.

Dr NS Bisht hian a zir bingna atangin, Valuation of Goods and Services from Forests of Mizoram a published a. He research atanga a tar lan danin Mizorama kum khat chhunga ramngaw hausakna kan hman ral zat hi hetiang hi a ni.

Timber :	Forest produce	Quantity	Amount
	Thingzai	74,932.16 cum	Rs 59,00,90,760/-
	Small woods		Rs 19,66,96,920/-
	Poles	693,379 nos	Rs 3,46,68,950/-
	Thing tuah(2.19 per heah, per day)		Rs. 112,46,43,848/-
	Total		Rs 194,61,00,478/-

Mau:

Mizorama mau chi 35 vel kan neih zinga kan hman tam ber chu Mautak a ni. North Eastern Space Application Centre (NESAC) Shillong-in an chhut dan chuan kum tina mau kan seng (harvest) theih hi pum 11,20,53,986 vel a ni a, kum khat chhungin Rs 8,40,40,500/- man zet kan hmang ral thin. Kan hman ral aia tam hi lo hal leh kangmei chhuak hian a tiriral thina ngaih a ni a, a pawiin a uiawm hle a ni.

Mautuai:

Mautuai hi chawhmeh atan kum khat chhungin Rs 15,28,91,000/- man zet kan la thin a ni. Mautuai awm lai chuan chhungkaw tam takin eizawn nan an hmang nasa hle.

Meihawl:

Mizote khawsak nana thil pawimawh tak a ni a. Kum khat chhunga meihawl kan hman ral zat hi Rs 2,70,00,000/- man zet a ni bawk.

NTFP:

Ram-chawhmeh Hruizik, Chingit, Zawngtah, Theirah chi hrang hrang, Pa, Pelh te, Khanghu, Khatual, Ankhapui, Thingthupui, Kawhtebel, Chakawk, Anhling, Bahra, Telhawng, hnim damdawi, pangpar chi hrang hrang etc. te hi kum khat chhungin Rs 25,00,00,000/- man zet kan eiral thin niin chhut a ni.

Ran chaw:

Bawng chaw atana luang leh thil dang kan hman te, Vawk chaw atana Changel leh Japanhlo kan hman te hi Rs 2,60,00,000/- man lai niin chhut a ni.

Tichuan Mizorama ramngaw hausakna(Direct benefit) kum khat chhunga kan hman ral hi Rs 272,09,99,743/- man zet a ni.

INTANGIBLE BENEFITS:

Ramngaw hian mita kan hmuh theih loh hna ropui tak tak min thawhsak reng bawk a, chuang chuan hringnun hi a kalphung pangaiin a kal thei chauh a ni. Chung zinga pawimawh zual te chauh han tar lang ila:

Boruak min vawn daihsak (Climateamelioration):

Mihring hmasawn zel hian boruak tibawhlhlahw thei khawl tam tak a siamchhuah avangin natna tam tak min thlen a, Thing leh mau hian chung boruaka bawhlhlahw te chu lo thlifimin boruak thianghlim min pe a. Chuang chuan ramngaw bul hnaia cheng mihringte hi khawpuia mihring chengte ai chuan an hrisel zawk thin a ni.

Das (1979) chuan thing pakhat hian kum 50 chhungin- Oxygen a siam, Boruak thlit fim, Lei min tur a ven, Tui a khawl khawm, Nungchate mamawh chi hrang hrang a pek man a chhut chhuah dan chuan thing pakhat kum 50 a upa-in kan hmuh theih loh (intangible benefit) min pek zawng zawng belh khawm chu Rs 1,27,00,000/- a ni. Ramngawin Boruak thianghlim min pek man hi Mizoramah hian kum khat chhungin Rs 16,90,00,000/- man vel niin chhut a ni.

Carbon sequestration:

Changkannain a ken khawl ropui tak takte hian malsawmna a thlen rualin boruak bawhlhlahw tam tak min siamsak a, Chung zinga khaw tilumtu, boruak tibawhlhlahw CO2 leng vel chu thing leh mau te hian hip lutin Oxygen an pe chhuak thung thin a. Mizorama ramngawin CO2 a hip ral man hi kum tin in Rs 27,04,00,000/- man zet a ni.

Water retention:

Kumkhat chhunga kan ram ngawin tui a khuah man leh a tui pek chhuah man hi Rs 12,00,00,000/- lai ni a chhut a ni.

Pollination:

Thlai leh thingte a lo rah a, chi a chhuah theih nana rannung te tak te te phengphehlep leh khuai ten hna ropui tak an thawh man hi Rs 72,00,00,000/- vela chhut a ni. Kan thawh theih rual loh hna min lo thawhsaktu hi an awm loh chuan kan huan thlai leh buh leh bal te hian rah a chhuah lo mai dawn asin. Khuai no kan ei thin te hi sim a hun tawh tak zet a ni.

Recreation:

Kan rama Park leh scenery mawi tak tak leh nuam tak tak te hi ramngaw chhung leh ramngaw depa awm vek a ni, heng hmun tlawh tur hian khualzin ram chhung leh ram pawn atanga lo kalte hnen atanga kum 6 chhunga revenue hmuh zat chu - Rs 2,31,64,436/- lai a a ni. Ramngaw hi nei lo ila chuan khualzin hiptu tur thil dang engmah a awm lo vang.

Biological Control:

Thlai leh theirah te eichhetu thilnung laka veng him tur hian nungcha te vek an pawimawh a, hetiang biological control hna an thawh man hi Rs 57,87,500/- ni a chhut a ni. Savate hian thlai eichetu hi an chaw atan an mamawh a, khuaithe hian thlai ei chhetu te hi an ei thin bawk a ni. Mihring tana hna ropui tak min thawhsaktu khuaithe hi kan suat nasa em em a, heng hi thil pawitak thlen theitu

a ni dawn tih hi hre nawn leh ila.

Tichuan, ramngawin hna min thawhsak leh a hausakna kan tel thin hlut zawng belh khawm hi kum khat chhungin Rs 515,35,29,750/ zet a ni. Mahse mipui mimir hian Forest-in min pek thil hlu kan sawi tak zozai te hi kan ngaihtuah ngai lem lova, a enkawl leh venna lamah pawh a phu angin sum pawh dah a ni ngai lo. Forest cover kan neih that avanga 14th Finance Commission-in suma min vurna pawh ramngaw enkawlina atan hi chuan kan chang tlem hle a ni.

RAMNGAW, heti taka hlu hian a thawhtur ang a thawh zel a, Zofate tan malsawmna a nih zel theih nan tichereu mai lovin humhalh zel a ngai a ni tih mi tinin i hre thar leh ang u.

FRONTLINE STAFF STUDY TOUR REPORT

Margret Lalramchhani
Principal FTS

EF&CC Dept. hnuuia Forester leh Forest Guard te chu Forest Training School Principal hovin ni 20.02.2019 atanga ni 09.03.2019 chhung khan Forester 5 leh Forest Guard 25 hruaiin North India Tour an nei a, an field duty atan a hriat tur tul leh hmun pawimawh te fanpui an ni.

Dehradun, Uttarakhand-ah thlen thlakpui phawt an ni a, heta tang hian Forest hmun pawimawh hrang hrang heng, 1) Forest Research Institute (FRI) 2) Wildlife Institute of India 3) Jim Corbett Tiger Reserve 4) Rajaji National Park 5) Delhi Zoo te an tlawh a ni. Heng bakah hian Nainital tlawhpui an ni a, a tukah Mossourie tlawhpui an ni bawk.

Ni 2.3.2019 khan Dehradun atangin New Delhi panin an chhuak leh a, Delhi-ah hian India ram a hmun pawimawh tak tak; Agra Fort , Taj Mahal, Indian Gate , Qutub Minar etc. tlawhpui an ni bawk. Field Staff te hian hlawk thlak an ti hle a ni.



2019/2/27 17:26



WII, Dehradun



Corbett TR

AWARENESS CAMPAIGN UNDER LUNGLEI FOREST DIVISION

Ni 15.03.2019 khan Lunglei Forest Division chuan DIET Conference Hall, Lunglei-ah Climate Change Adaptation and Mitigation chungchangah Awareness hlawhtling tak a buatsaih a, he campaign ah hian Pu C. Lalthankima MFS, Pu Chinliansiyama Lecturer DIET leh Pu Lalrochama Honorary Wildlife Warden te chu Resource Person an ni. Mi 200 velin he programme hi an chhim a ni.



Tin, Ni 05.02.2019 khan Lunglei Govt. College-ah Medicinal Plants chungchang zirhona neih a ni bawk. He hunah hian ramhmul damdawi hrang hrang pawimawh dan te, a chinpun dan leh a humhalh dan te zir ho a ni a, Dr. Kimi SMPB, Dr. Vidhya Sagar DFO Lunglei leh Pu David Pakhuangte ten PPP hmangin zirtirna an pe. Herbal plants exhibition cum sale tha tak neih a ni bawk. Mi 120 velin he hun hi an hmang a ni.

